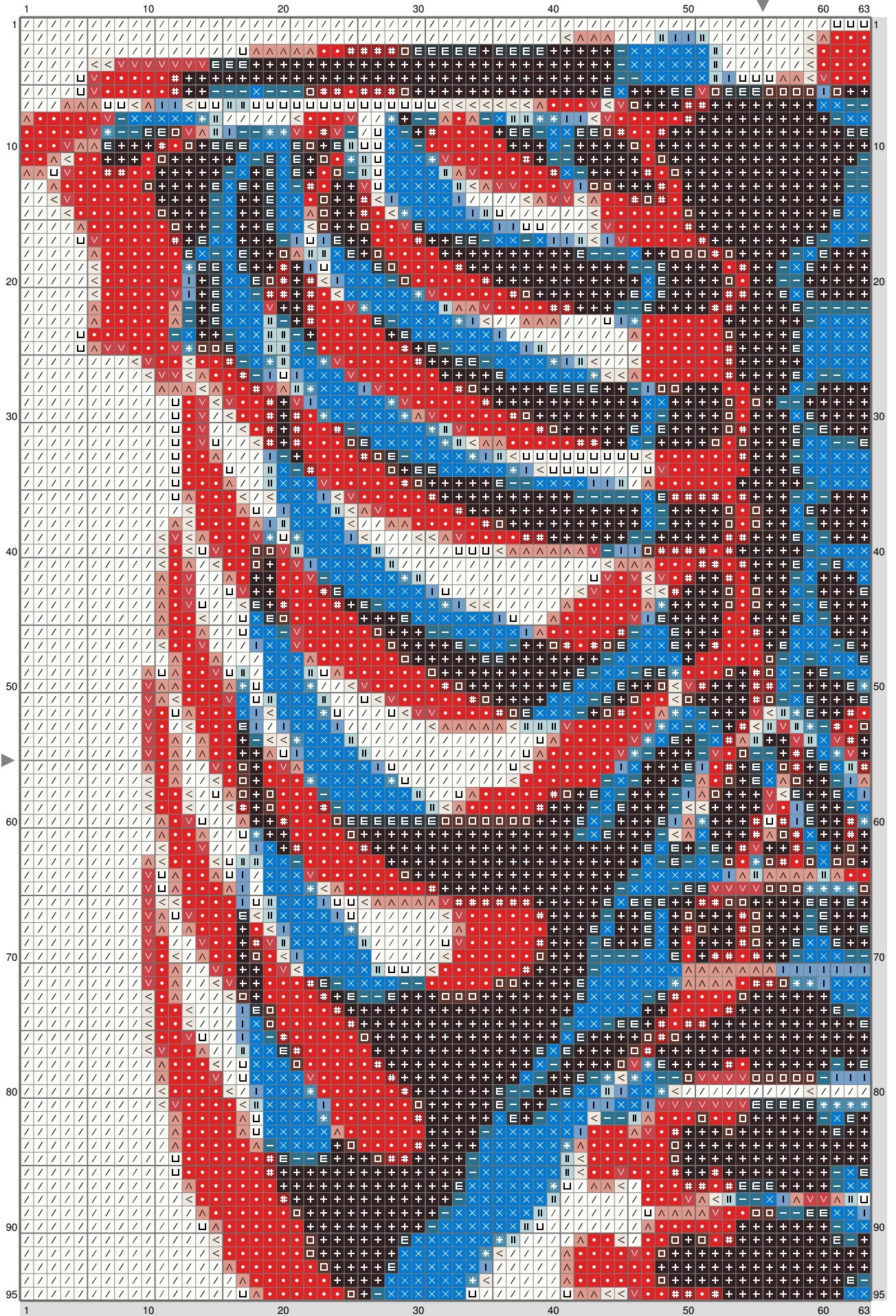
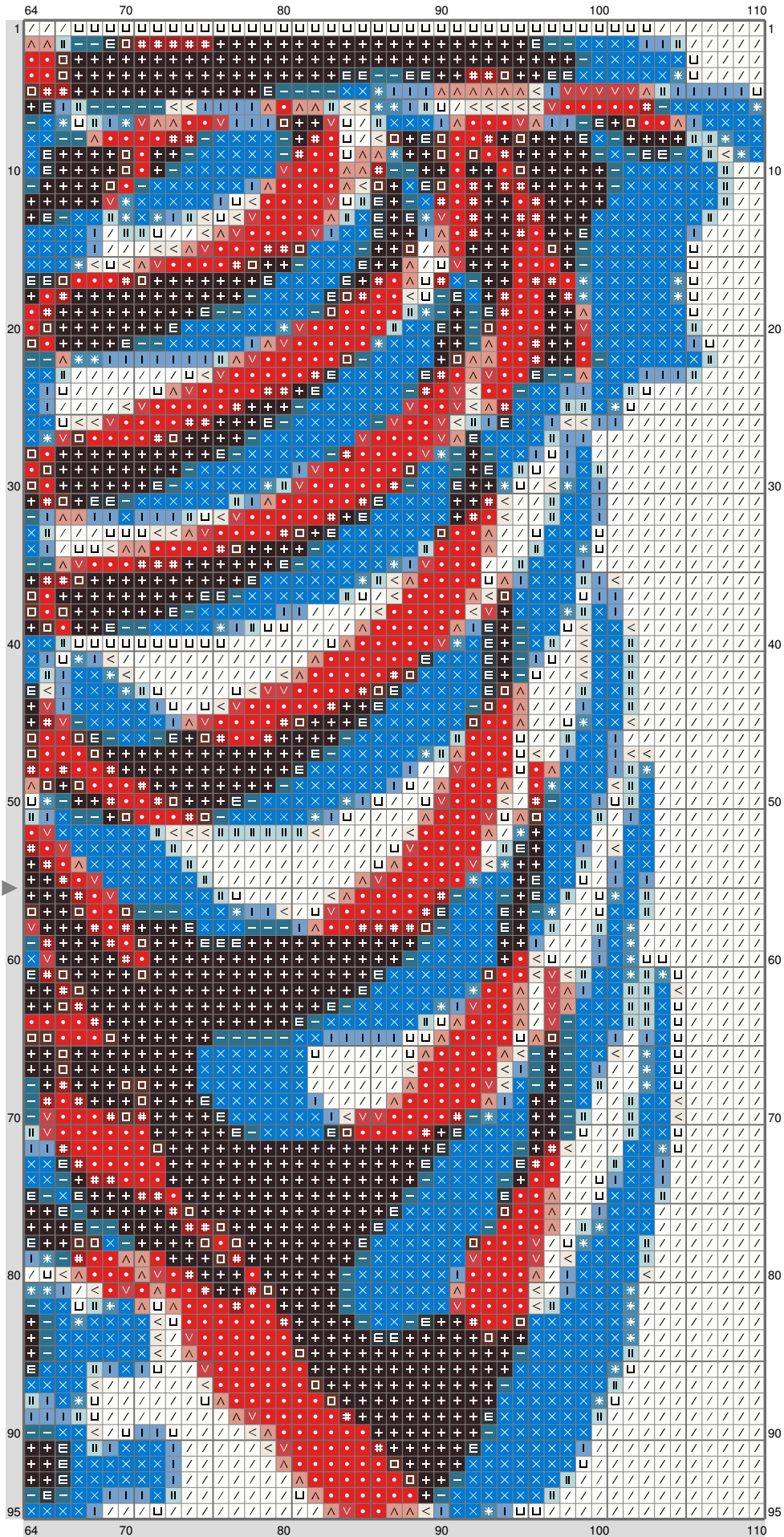


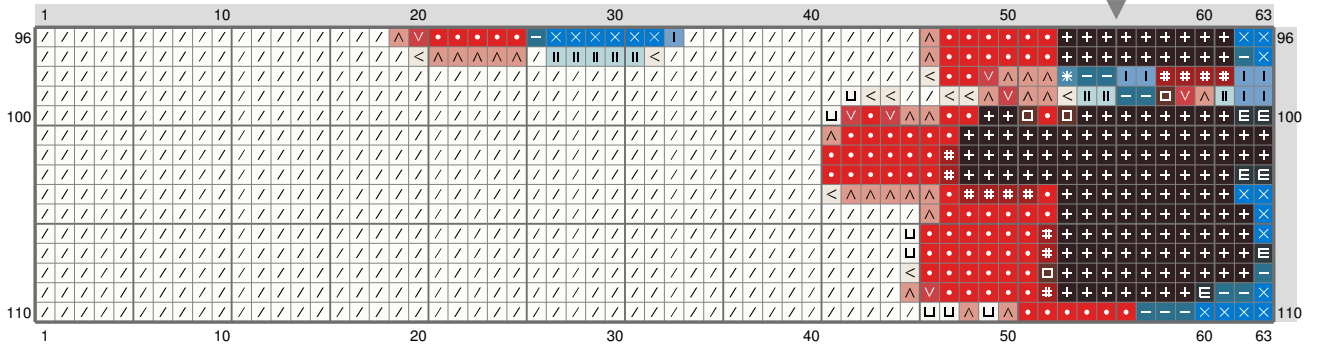
# Untitled



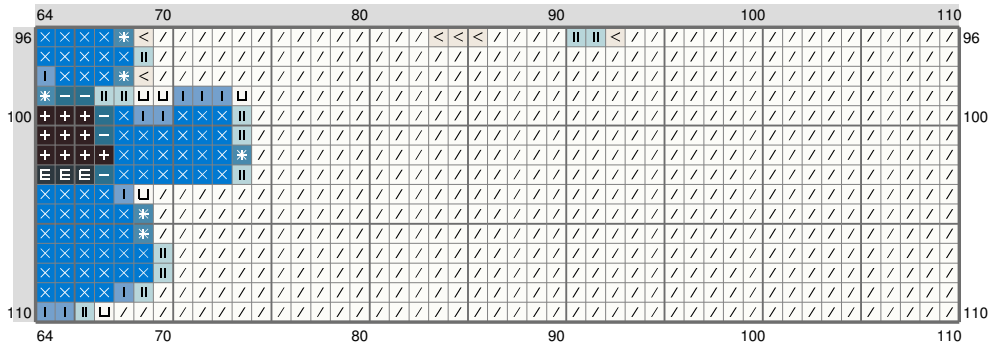
# Untitled



# Untitled



# Untitled



Stitch Count: 110w x 110h  
 Finished Size: 19.95 cm x 19.95 cm (28 ct./inch)  
 Cloth: Linen  
 Cloth's Color: White  
 # of colors: 15 Colors

## Color Table (DMC)

### Cross Stitch

	939	(2348 ct)
	500	(349 ct)
	938	(281 ct)
	3765	(411 ct)
	995	(1629 ct)
	3760	(162 ct)
	334	(271 ct)
	3777	(344 ct)
	349	(1547 ct)
	347	(254 ct)
	3772	(342 ct)
	747	(217 ct)
	822	(268 ct)
	3865	(298 ct)
	BLANC	(3379 ct)